

CERTIFICATE OF LOCATION OF GOVERNMENT CORNER

NORTHEAST Corner of Section 35, Township 105, Range 42, 5TH P.M.

STATE OF MINNESOTA, County of MURRAY

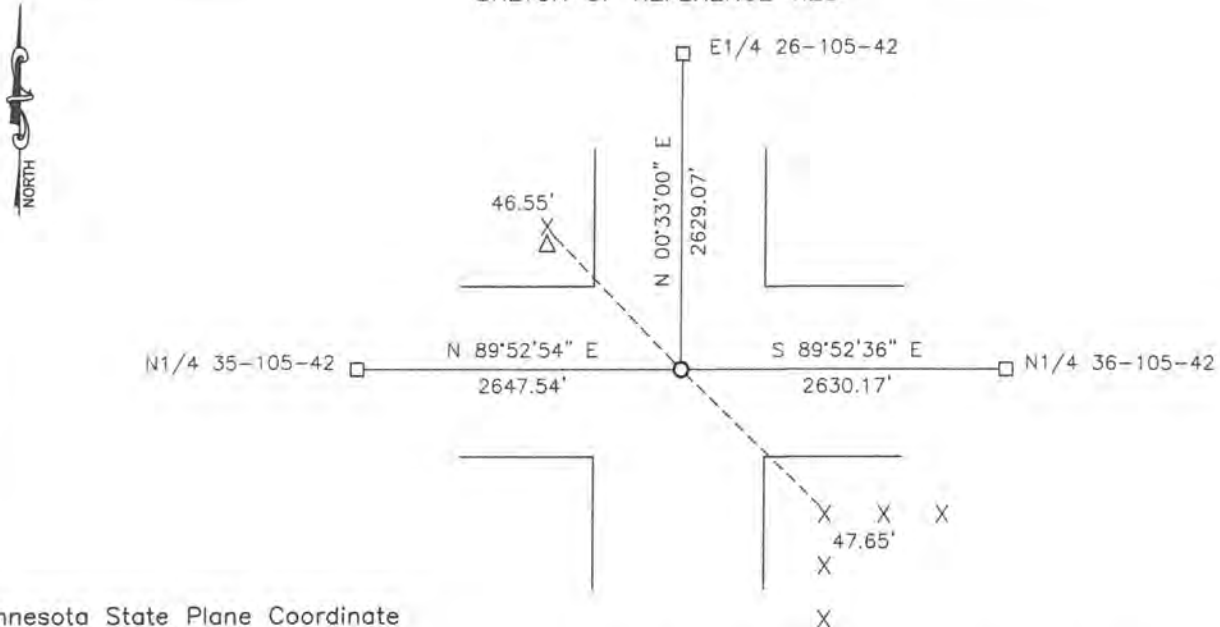
At the corner location shown on the sketch:

On 04-23-2018 found a 8"X8"X10" STONE.
DATE

left monument as found, lowered monument, removed monument (explain)

On 04-23-2018 placed a 5/8" IRON WITH SEAL #43844 OVER STONE.
DATE

SKETCH OF REFERENCE TIES



Minnesota State Plane Coordinate
 System Murray County Datum
 NAD83 (1996)

N: 105400.862
 E: 479669.700

Nail and bottle cap in pedestal guard post NW 46.55'
 Nail and bottle cap in old corner fence post SE 47.65'

Statement of evidence relative to this corner location is on back of page.

I hereby certify that this document and the data contained herein was prepared by me or under my direct supervision.

Daniel L. Bueltel

Daniel L. Bueltel
 License No. 43844

8/28/18
 DATE

Statement of Evidence

In 1861, D.W. Wellman and S.S. Smoot did the original subdivision of the township.

On May 25, 1901, J.W. Woolstienkraft, County Surveyor, set a stone at the corner.

On September 25, 1930, J.W. Woolstienkraft, County Surveyor, found the stone at the corner and set ties as follows: Fence corner 47.0' SE; Fence corner 47.6' SW; Fence corner 42.0' NW.

On April 23, 2018, Bueltel-Moseng Land Surveying dug with a backhoe and found an 8"x8"x10" stone. We set a 5/8" iron with seal #43844 over the stone.